

## EGFR(L858R)

**Catalog Number:** 26082

**Gene Symbol:** EGFR/HER1/ERBB1

**Description:** Anti-EGFR(L858R) Mouse Monoclonal Antibody

**Background:** EGFR is a receptor tyrosine kinase binding ligands of the EGF family and activating several signaling cascades to convert extracellular cues into appropriate cellular responses. It activates at least 4 major downstream signaling cascades including the RAS-RAF-MEK-ERK, PI3 kinase-AKT, PLCgamma-PKC and STATs modules. Defects in EGFR are associated with lung cancer (LNCr).

**Immunogen:** A synthetic peptide from the internal region of EGFR, which includes the mutation of L858R, human origin.

**Tested Applications:** ELISA, WB, IF, IHC

**Recommended Dilutions:**

ELISA:	1:1000-1:5000
WB:	1:1000-1:5000
IF:	1:50-1:100
IHC:	1:50-1:100

**Concentration:** 1 mg/ml

**Host:** Mouse

**Clonality:** Monoclonal

**Purity:** Purified from ascites

**Format:** Liquid

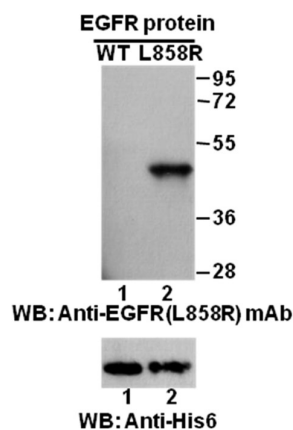
**Preservative:** No

**Constituents:** PBS (without Mg<sup>2+</sup> and Ca<sup>2+</sup>), pH 7.4, 150 mM NaCl, 50% glycerol

**Species Reactivity:** Recognizes EGFR (L858R), but not wild type EGFR from vertebrates.

**Storage Conditions:** Store at -20°C. Avoid repeated freezing and thawing

Western blot:



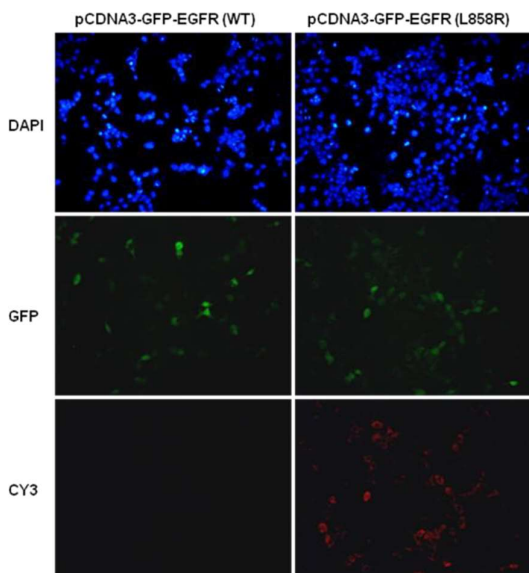
**Western blot analysis of recombinant EGFR (L858R) and wild type proteins.**

Purified His-tagged EGFR (L858R) protein (amino acid 702-987, lane 2, Cat. # 10230) and corresponding wild type protein (lane 1, Cat. # 10210) were blotted with anti-EGFR (L858R) mouse monoclonal antibody (Cat. # 26082). Proteins loading (bottom) were blotted with anti-His-tag monoclonal antibody (Cat. # 28004).

FOR RESEARCH USE ONLY. NOT FOR DIAGNOSTIC APPLICATIONS

---

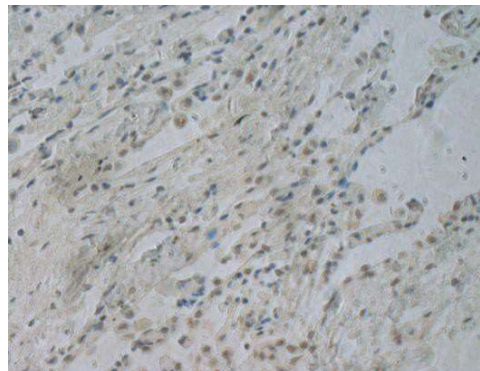
**Immunofluorescence:**



**Immunofluorescence of cells expressing EGFR proteins with anti-EGFR (L858R) antibody.**

HEK293T cells were transfected with pCDNA3-GFP-EGFR (WT) plasmid (left column) or pCDNA3-GFP-EGFR (L858R) plasmid (right column), then fixed and stained with anti-EGFR (L858R) monoclonal antibody (Cat. # 26082).

**Immunohistochemistry:**



**Immunohistochemical analysis of paraffin-embedded human NSCLC tissue with anti-EGFR (L858R) monoclonal antibody (Cat. # 26082).**

Tissue samples were fixed with formaldehyde and blocked with 1% serum for 15 min at 37 °C. Antigen retrieval was by heat mediation in citrate buffer (pH6). Samples were then incubated with primary antibody (1:100) overnight at 4°C. HRP-conjugated Goat. anti-mouse IgG (dilution 1:50) was used as secondary antibody.

---

**FOR RESEARCH USE ONLY. NOT FOR DIAGNOSTIC APPLICATIONS**